



# Update from Consultant Team

## Neches Regional Flood Planning Group

February 18, 2026

1

## Regional Flood Plan Updates

- Task 4C – Performance of FMEs
- Task 5B – Recommendation of List of FMXs to be performed by TWDB



2

5

## Task 4C – Performance of FMEs

### Task 5B - Recommendation of List of FMXs to be performed by TWDB

3

5

## Task 4C – Performance of FMEs

- To perform, within the RFBG's resources and the time available, a portion of currently recommended FMEs to identify additional FMPs for inclusion Regional Flood Plan. Implementing these select FMEs includes the following:
  - Evaluate flood risks in areas with currently limited flood risk data
  - Evaluate flood risk reduction solutions, including feasibility studies
  - Preliminary engineering needed to identify, evaluate, and recommend additional potentially feasible FMPs
- The primary function of each recommended FMP must be flood risk reduction to life and property, and they must include quantifiable flood risk reduction benefits.
- Budget allocated - \$598,675

4

## Task 4C – Decision Process Approach

5

- The RFPG ultimately directs the work conducted under Task 4C
- Informed by results of Task 2, Task 3, and RFPG input
- Considerations for FME Selection Criteria
  - Focus on FMEs most likely to generate FMPs
  - Maximize number of FMPs
  - Maximize flood risk reduction (Task 2)
    - Structures and population at risk
    - Critical facilities at risk
  - FME requiring only a Benefit/Cost Ratio (BCR) to be an FMP
  - Level-of-effort (cost) to perform FME relative to available budget

5

## Task 5B – FMEs for TWDB

5

- TWDB FME Program provides additional funds to perform FMEs for **small/rural communities**
- RFPGs to send a prioritized list of FMEs to TWDB by March 26, 2026
- 2 FMEs are expected to be completed before the Draft RFP due date (May 26, 2027)
  - Community **MUST** affirm project
  - Community **MUST** commit to be engaged
  - RFPG vote in early 2026 for list to send to TWDB

6

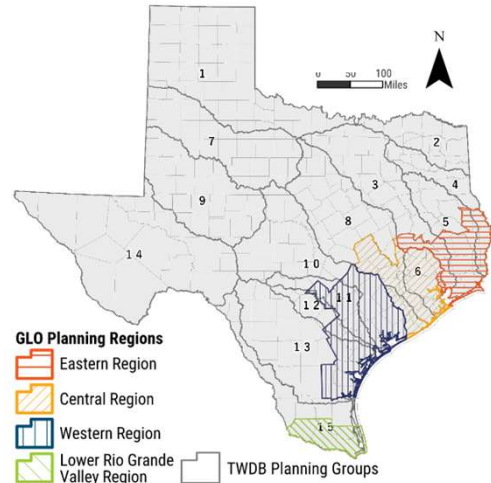
# Task 4C/5B – Decision Process Approach

5

- Leverage ongoing/previous studies expected to elevate FMEs and generate FMPs
  - Master Drainage Plans
  - GLO Combined River Basin Flood Study

## Flood Planning Areas

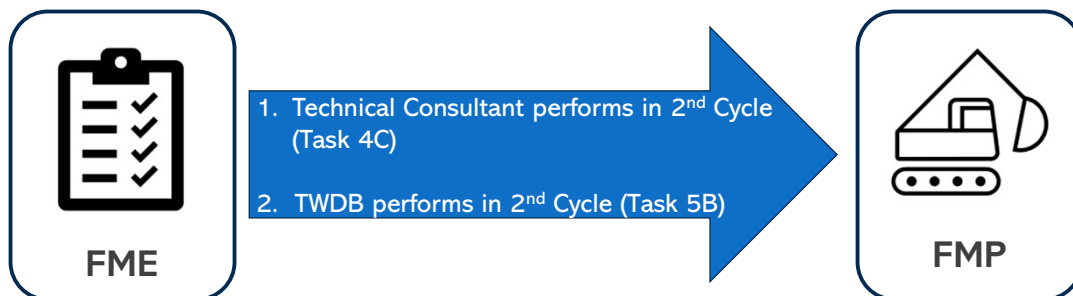
Texas General Land Office and Texas Water Development Board



7

# Task 4C/5B – Performance of FMEs

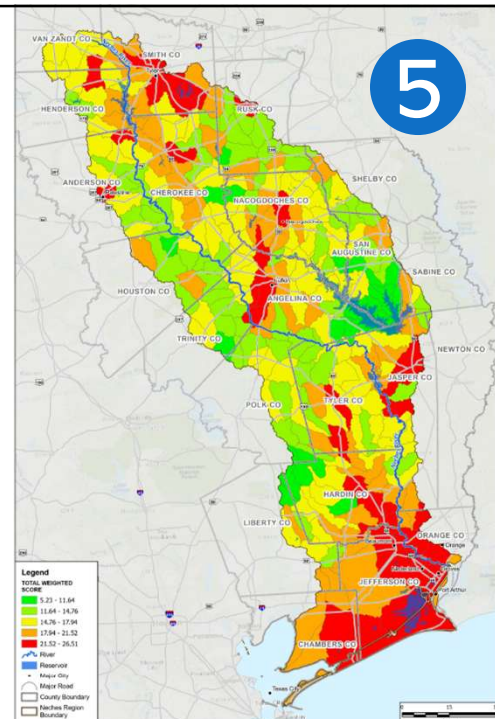
5



8

## Task 4C/5B FME Ranking

- Utilize Task 3B Needs Assessment as initial ranking
  - FMEs that intersect areas of high flood mitigation need
- Intersect potentially feasible FMEs with results of the Needs Analysis
- Potential secondary criteria/priorities to consider:
  - Rural areas who do not have funding
  - Highest development potential
  - Regional benefit (multiple sponsors)
  - Sponsor involvement
  - Regional goals



9

## Factors to consider for FME Prioritization

- Considerations for FME Selection Criteria
  - Level-of-effort (cost) to perform FME relative to available budget
  - Maximize flood risk reduction (Task 2)
    - Structures and population at risk
    - Critical facilities at risk
  - Focus on FMEs most likely to generate FMPs
  - Highest development potential
  - Focus on areas in the region that have not been recently studied (middle and upper basin)
  - Regional benefit (multiple sponsors)
  - Sponsor involvement
  - Regional goals
  - Potential to implement Nature-based Solutions (NbSs)

10

## Cycle 1 FME Weighting Factors

5

Which Factors are Most Important When Selecting an FME to perform?

Mentimeter



12

11

## Cycle 2 FME Weighting Factors

5

2028 Neches Regional Flood Plan  
FME Weighting Factors

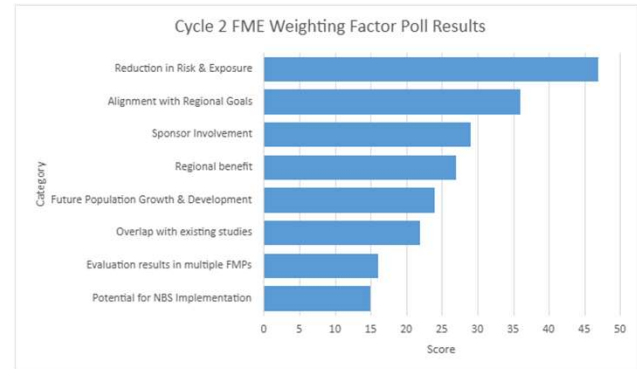


12

## Cycle 2 FME Weighing Factor Poll Results

5

- Responses collected from RFPG members
- Each individual response assessed
  - Top Factor receives score of '8'
  - Bottom Factor receives score of '1'



13

## Prioritization of Results

5

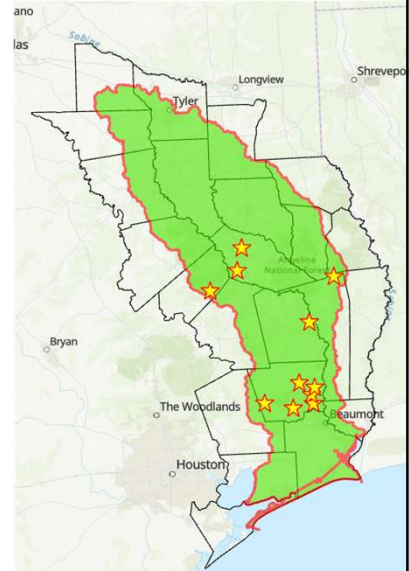
- Scoring methodology was implemented to rank FMEs within Neches FPR
- FMEs separated into three categories
  - **Primary FMEs**
    - Will be prioritized to be performed first with available funding
  - **Secondary FMEs**
    - Lower ranked FMEs, but may be performed if budget and schedule allows after primary FMEs are performed
  - **Non feasible FMEs**
    - FME too large (cost/schedule) to completed with available budget
    - Overlapping study that is likely to evaluate and determine FMP for inclusion in current RFP cycle
    - Unknown ability to implement project

14

## Task 4C/5B Initial Locations

5

- Batch 1
  - 2 FMEs for FNI
  - 2 FMEs for HDR
  - 2 FMEs for TWDB (Task 5B)
- Batch 2
  - Determine additional selections based on schedule and budget

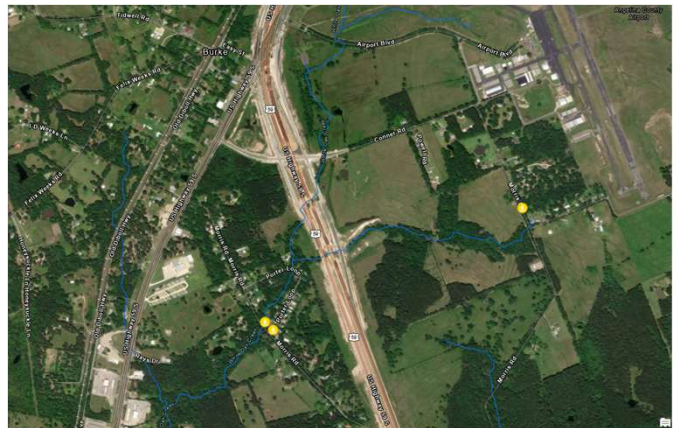


15

## Task 4C/5B Initial Locations

5

- Morris Road Drainage Improvements (05-51-0000000166)
  - Identified from Public Webmap
  - Will require new model
  - Examine White Oak Creek to investigate potential conveyance improvements for Morris Rd.
  - Potential Sponsor: [City of Burke](#)

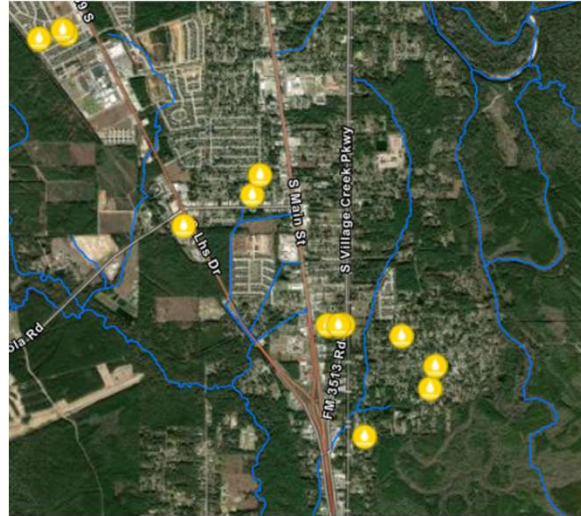


16

## Task 4C/5B Initial Locations

5

- City of Lumberton Local Improvements (05-51-0000000168)
  - Identified from Public Webmap
  - Model available (DD6 FIF Model)
  - Examine neighborhoods within city to see what crossing/drainage improvements can be implemented to benefit residential properties
  - Potential Sponsor: [City of Lumberton](#)

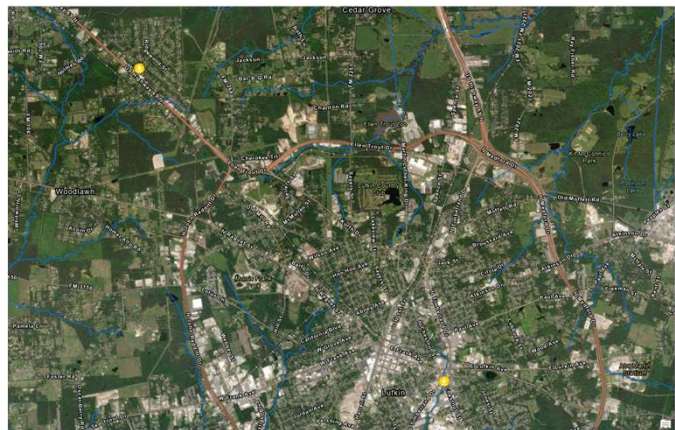


17

## Task 4C/5B Initial Locations

5

- City of Lufkin Conveyance Improvements
  - Identified from Public Webmap, originates from City of Lufkin Master Drainage Plan (05-51-0000000045)
  - Will require new model
  - Examine areas within and in the vicinity of city limits to alleviate flooding impacts to properties
  - Potential Sponsor: [City of Lufkin](#)

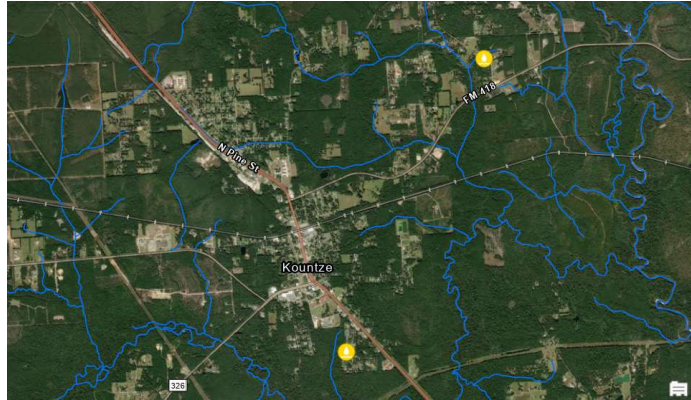


18

## Task 4C/5B Initial Locations

5

- City of Kountze Conveyance Improvements
  - Identified from Public Webmap, originates from Hardin County Master Drainage Plan (05-51-0000000027)
  - Will require new model
  - Conduct ditch conveyance improvements and potential detention to alleviate flooding impacts to nearby properties
  - Potential Sponsor: [City of Kountze](#)

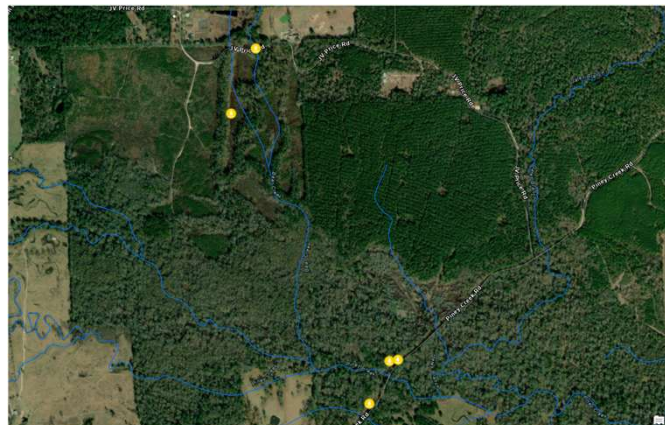


19

## Task 4C/5B Initial Locations

5

- Bear Creek & Piney Creek Conveyance Improvements (due east of Groveton)
  - Identified from Public Webmap, originates from Trinity County Master Drainage Plan (05-51-0000000041)
  - Will require new model
  - Conveyance Improvements along Bear Creek and Piney Creek to reduce inundation for the area.
  - Potential Sponsor: [Trinity County](#)

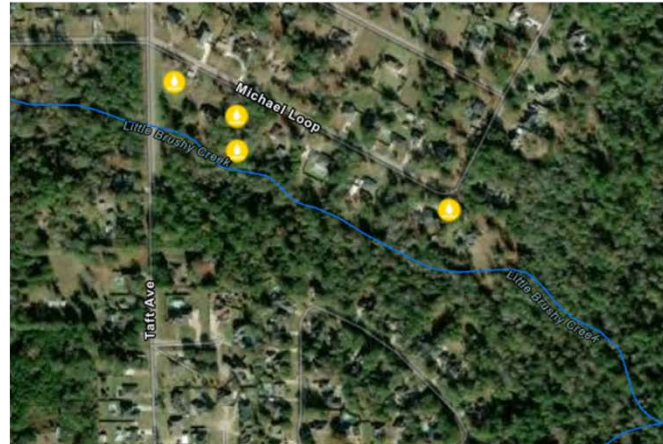


20

## Task 4C/5B Initial Locations

5

- Little Brushy Creek Improvement (northern edge of the City of Lumberton)
  - Identified from Public Webmap, originates from Hardin County Master Drainage Plan (05-51-0000000027)
  - Requires new model
  - Action: Improve capacity of Little Brushy Creek to alleviate flooding for nearby neighborhoods.
  - Potential Sponsor: [City of Lumberton](#)



21

## Task 4C/5B Initial Locations

5

- Pine Ridge Conveyance Improvements (located due west of Lumberton)
  - Identified from Public Webmap, originates from Hardin County Master Drainage Plan (05-51-0000000027)
  - Model available (DD6 FIF Model)
  - Conduct conveyance improvements to alleviate flooding for the Pine Ridge community.
  - Potential Sponsor: [Hardin County](#)



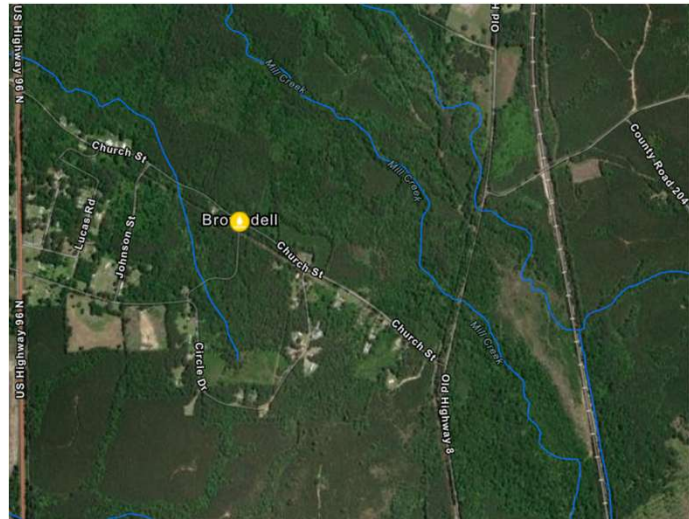
22



## Task 4C/5B Initial Locations

5

- CR 219 Ditch/Detention Improvement
  - Identified from Public Webmap, originates from Jasper County Master Drainage Plan (05-51-000000030)
  - Requires new model
  - Drainage improvements to help residential properties near County Road 219 and Hwy 96
  - Potential Sponsor: [City of Browndell](#)

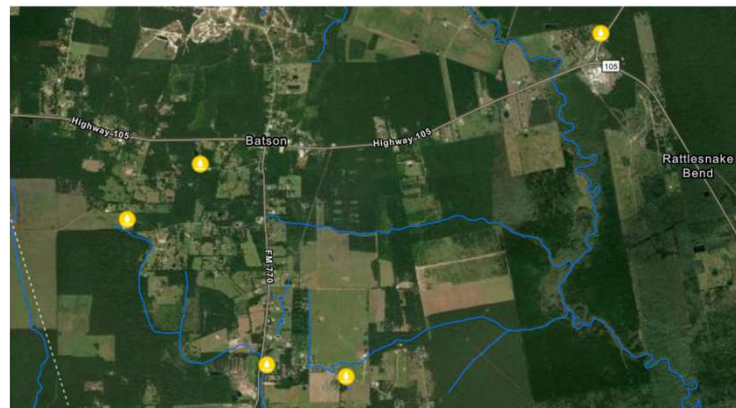


25

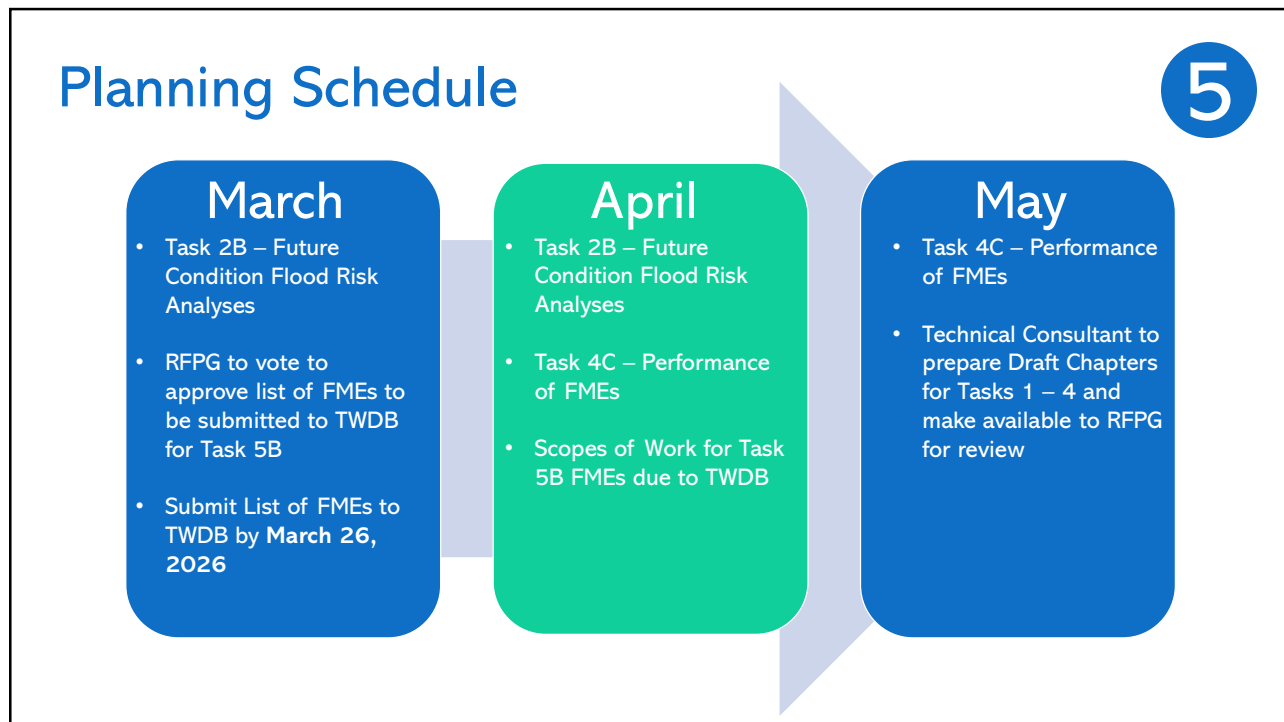
## Task 4C/5B Initial Locations

5

- City of Batson Ditch Improvements
  - Identified from Public Webmap, originates from Hardin County Master Drainage Plan (05-51-000000027)
  - Requires new model
  - Improve the capacity of existing drainage ditches in the community of Batson to alleviate flooding issues.
  - Potential Sponsor: [Hardin County](#)



26



27