

Update from Consultant Team


Neches Regional Flood Planning Group

March 18, 2026

1

Regional Flood Plan Updates

- Update on Task 4C: Performance of FMEs
 - Discussion and authorization for the Technical Consultant Team to proceed with performing FMEs
- Update on Task 5B: Recommend a list of FMEs to be performed by the TWDB
 - Approval of the definition of a small or rural community
 - Approval of the prioritized list of FMEs to be submitted to the TWDB



2

5

Task 4C – Performance of FMEs

3

5

Task 4C – Performance of FMEs

- To perform, within the RFPG's resources and the time available, a portion of currently recommended FMEs to identify additional FMPs for inclusion Regional Flood Plan. Implementing these select FMEs includes the following:
 - Evaluate flood risks in areas with currently limited flood risk data
 - Evaluate flood risk reduction solutions, including feasibility studies
 - Preliminary engineering needed to identify, evaluate, and recommend additional potentially feasible FMPs
- The primary function of each recommended FMP must be flood risk reduction to life and property, and they must include quantifiable flood risk reduction benefits.
- Budget allocated - \$598,675

4

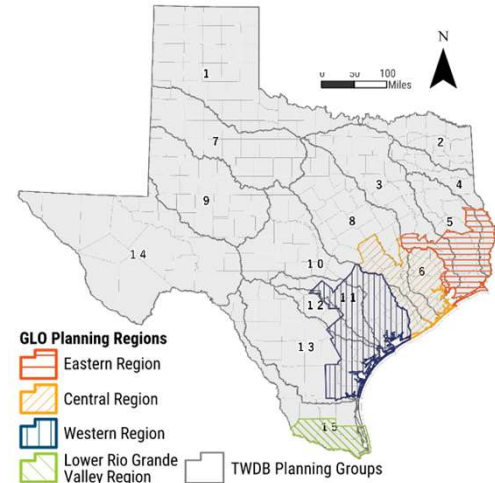
Task 4C/5B – Decision Process Approach

5

- Leverage ongoing/previous studies expected to elevate FMEs and generate FMPs
 - Master Drainage Plans
 - GLO Combined River Basin Flood Study

Flood Planning Areas

Texas General Land Office and
Texas Water Development Board

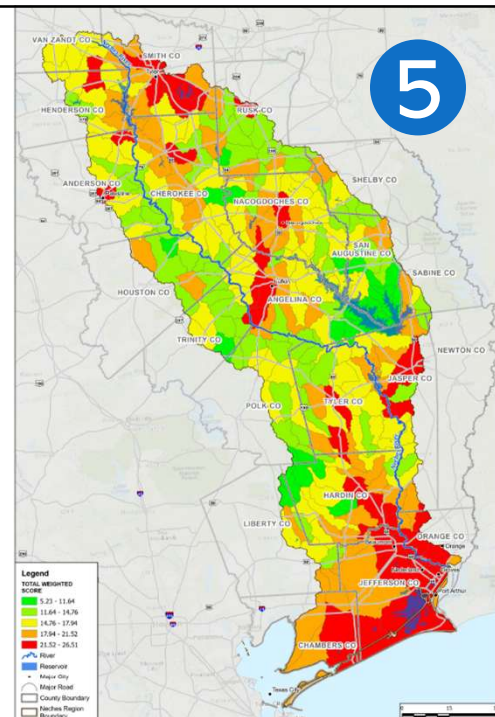


5

Task 4C/5B FME Ranking

5

- Utilize Task 3B Needs Assessment as initial ranking
 - FMEs that intersect areas of high flood mitigation need
- Intersect potentially feasible FMEs with results of the Needs Analysis
- Potential secondary criteria/priorities to consider:
 - Rural areas who do not have funding
 - Highest development potential
 - Regional benefit (multiple sponsors)
 - Sponsor involvement
 - Regional goals



6

Factors considered for FME Prioritization

5

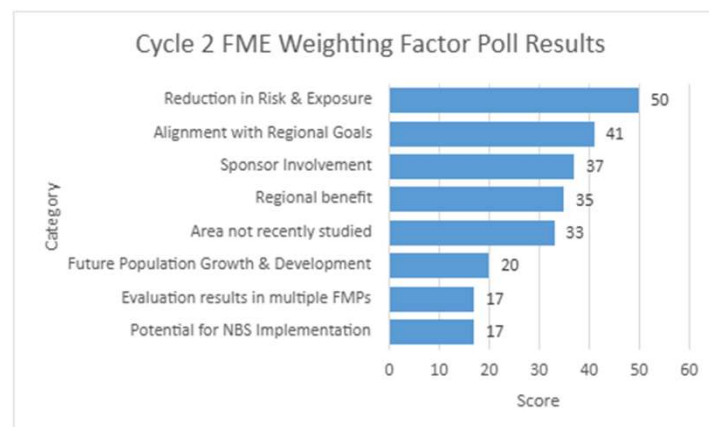
- Considerations for FME Selection Criteria
 - Level-of-effort (cost) to perform FME relative to available budget
 - Maximize flood risk reduction (Task 2)
 - Structures and population at risk
 - Critical facilities at risk
 - Focus on FMEs most likely to generate FMPs
 - Highest development potential
 - Focus on areas in the region that have not been recently studied (middle and upper basin)
 - Regional benefit (multiple sponsors)
 - Sponsor involvement
 - Regional goals
 - Potential to implement Nature-based Solutions (NbSs)

7

Cycle 2 FME Weighing Factor Poll Results

5

- Responses collected from RFPG members
- Each individual response assessed
 - Top Factor receives score of '8'
 - Bottom Factor receives score of '1'



8

Top 10 FMEs for Task 4C & 5B

5

Rank	FME Name	Description	Sponsor	Task
1	Hardin County Master Drainage Plan	Perform H&H modeling to identify and define flood risk, develop conceptual alternatives to reduce flood risk, develop OPCC for conceptual alternatives, and rank projects. Conceptual alternatives should evaluate feasibility of nature based solutions.	Hardin	4C
3	Angelina County Master Drainage Plan	Perform H&H modeling to identify and define flood risk, develop conceptual alternatives to reduce flood risk, develop OPCC for conceptual alternatives, and rank projects. Conceptual alternatives should evaluate feasibility of nature based solutions.	Angelina	4C
3	Nacogdoches County Master Drainage Plan	Perform H&H modeling to identify and define flood risk, develop conceptual alternatives to reduce flood risk, develop OPCC for conceptual alternatives, and rank projects. Conceptual alternatives should evaluate feasibility of nature based solutions.	Nacogdoches	5B
6	Jasper County Master Drainage Plan	Perform H&H modeling to identify and define flood risk, develop conceptual alternatives to reduce flood risk, develop OPCC for conceptual alternatives, and rank projects. Conceptual alternatives should evaluate feasibility of nature based solutions.	Jasper	5B
8	Henderson County Master Drainage Plan	Perform H&H modeling to identify and define flood risk, develop conceptual alternatives to reduce flood risk, develop OPCC for conceptual alternatives, and rank projects. Conceptual alternatives should evaluate feasibility of nature based solutions.	Henderson	5B

9

Top 10 FMEs for Task 4C & 5B

5

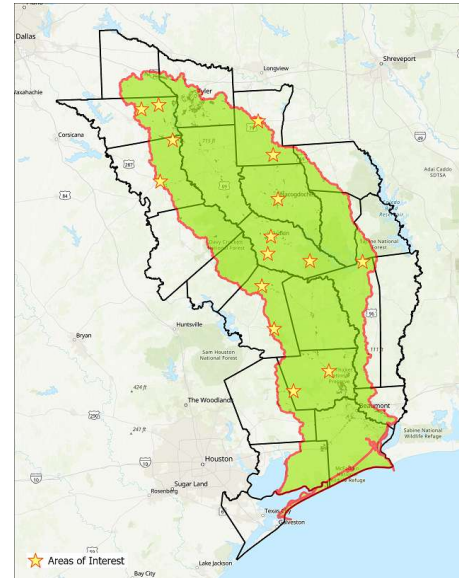
Rank	FME Name	Description	Sponsor	Task
11	Polk County Master Drainage Plan	Perform H&H modeling to identify and define flood risk, develop conceptual alternatives to reduce flood risk, develop OPCC for conceptual alternatives, and rank projects. Conceptual alternatives should evaluate feasibility of nature based solutions.	Polk	5B
15	Anderson County Master Drainage Plan	Perform H&H modeling to identify and define flood risk, develop conceptual alternatives to reduce flood risk, develop OPCC for conceptual alternatives, and rank projects. Conceptual alternatives should evaluate feasibility of nature based solutions.	Anderson	5B
18	City of Lufkin Detention Pond Construction & Improvements	Evaluate project to quantify benefits, evaluate impacts, and begin design for a retention pond behind Inez Timms property. Increase holding capacity of existing retention ponds throughout the city.	Lufkin	5B
19	Rusk County Master Drainage Plan	Perform H&H modeling to identify and define flood risk, develop conceptual alternatives to reduce flood risk, develop OPCC for conceptual alternatives, and rank projects. Conceptual alternatives should evaluate feasibility of nature based solutions.	Rusk	5B
33	City of Nacogdoches Flood Mitigation Project	H&H study to mitigate the wide-spread flooding that occurs along LaNana and Banita Creeks in the City of Nacogdoches	Nacogdoches	5B

10

Task 4C/5B Initial Locations

5

- Batch 1
 - Minimum of 2 Study Areas for FNI
 - Hardin County Master Drainage Plan
 - Minimum of 2 Study Areas for HDR
 - Angelina County Master Drainage Plan
 - 2 FMEs for TWDB (Task 5B)
 - List of FMEs for Task 5B
- Batch 2
 - Determine additional selections based on schedule and budget



11

Hardin County Master Drainage Plan

- Ditch/Drainage Improvements in the City of Batson
 - Requires new model
 - Improve the capacity of existing drainage ditches in the community of Batson to alleviate flooding issues.
 - Potential Sponsor: [Hardin County](#)

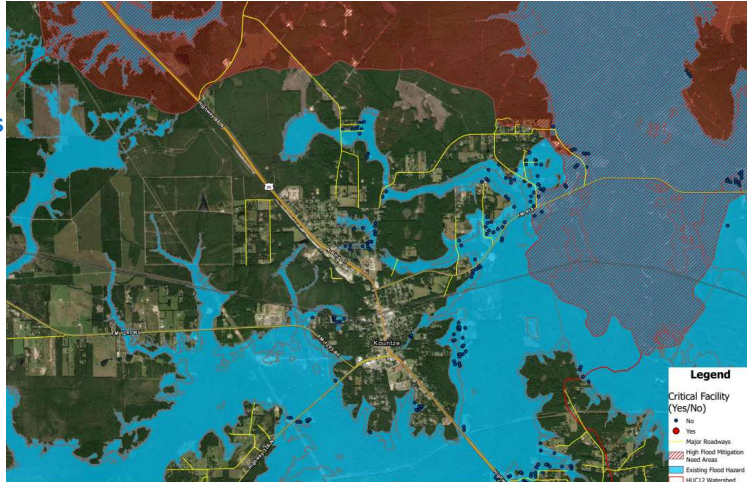


12

Hardin County Master Drainage Plan

5

- City of Kountze Conveyance Improvements
 - Identified from Public Webmap and Exposure Hotspot Analysis
 - Will require new model
 - Conduct ditch conveyance improvements and potential detention to alleviate flooding impacts to nearby properties
 - Potential Sponsor: [City of Kountze](#)

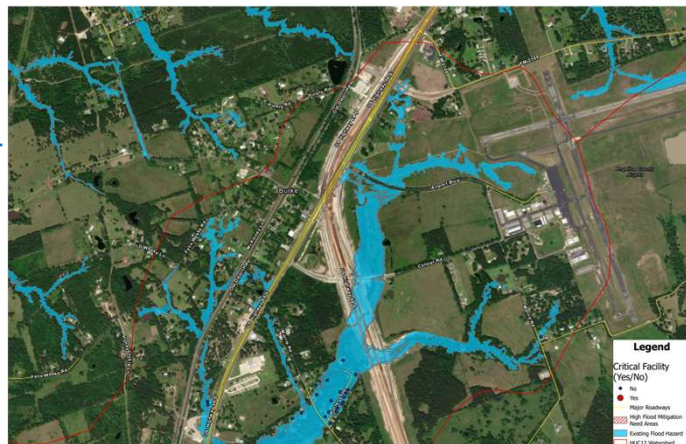


13

Angelina County Master Drainage Plan

5

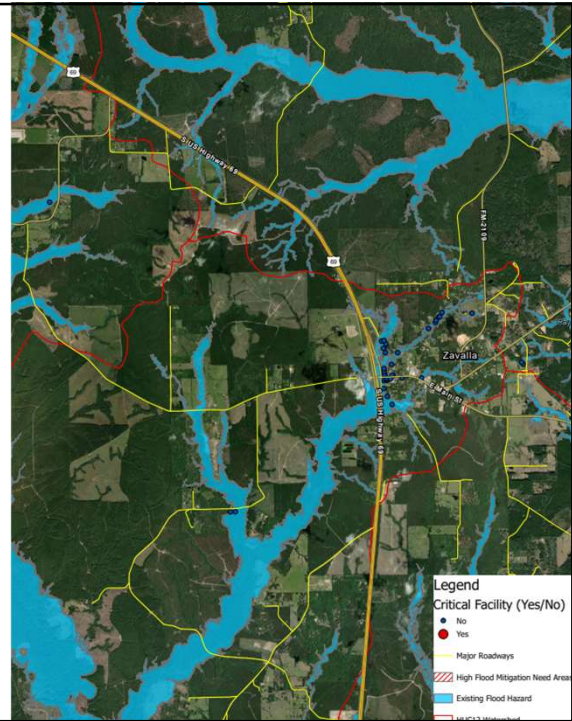
- Morris Road Drainage Improvements (05-51-000000166)
 - Identified from Public Webmap, previously listed as an FME (05-51-000000166)
 - Will require new model
 - Examine White Oak Creek to investigate potential conveyance improvements for Morris Rd.
 - Potential Sponsor: [City of Burke](#)



14

Angelina County Master Drainage Plan

- Drainage Improvements for Sandy Creek in City of Zavalla
 - Identified from Exposure Hotspot Analysis
 - Will require new model
 - Examine Sandy Creek to investigate potential conveyance improvements for the City of Zavalla
 - Potential Sponsor: [City of Zavalla](#)



15

ACTION ITEM FOR CONSIDERATION:

5

1. Authorization from the RFPG for the Technical Consultant team to proceed with performing FMEs.

16

5

Task 5B - Recommendation of List of FMXs to be performed by TWDB

17

5

Task 5B – FMEs for TWDB

- TWDB FME Program provides additional funds to perform FMEs for **small/rural communities**
- RFPGs to send a prioritized list of FMEs to TWDB by March 26, 2026
- 2 FMEs are expected to be completed before the Draft RFP due date (May 26, 2027)
 - Community **MUST** affirm project
 - Community **MUST** commit to be engaged
 - RFPG vote in early 2026 for list to send to TWDB

18

Task 5B - Rural Sponsor Definition

5

- March 26, 2026
 - Ranked list of FMEs due to TWDB
 - Scope of Work for the first two FMEs due to TWDB
- April 24, 2026
 - Scope of Work for additional FMEs to TWDB
- February 19, 2027
 - Draft Report of first two FMEs and proposed FMPs due to RFPG
- April 26, 2027
 - Final Report of FMEs to RFPG for inclusion in Draft 2028 RFP

Rural Applicant – An applicant that is:

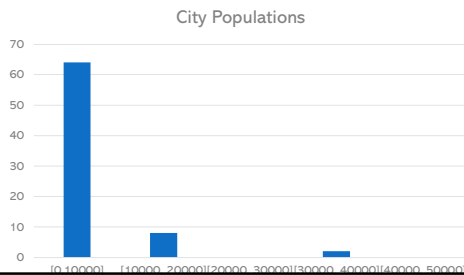
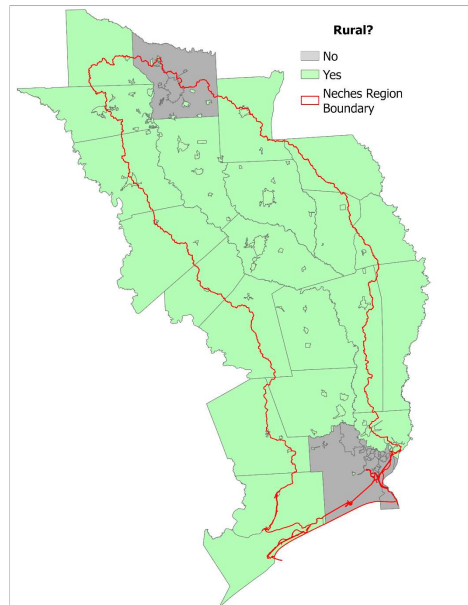
- (A) a nonprofit water supply or sewer service corporation created and operating under Chapter 67 of the Texas Water Code or a district or authority created under Section 52, Article III, or Section 59, Article XVI, Texas Constitution, no part of the service area of which is located in an urban area with a population of more than 50,000;
- (B) a municipality:
 - (i) with a population of 10,000 or less; or
 - (ii) located wholly in a county in which no urban area has a population of more than 50,000;
- (C) a county in which no urban area has a population of more than 50,000; or
- (D) an entity that:
 - (i) is a nonprofit water supply or sewer service corporation created and operating under Chapter 67 of the Texas Water Code, a district or authority created under Section 52, Article III, or Section 59, Article XVI, Texas Constitution, a municipality, county, or other political subdivision of the state, or an interstate compact commission to which the state is a party; and

19

Task 5B - Rural Sponsor Definition

5

- 2024-2025 Flood Intended Use Plan Definition
 - 64 cities with a population of 10,000 or less
 - (71 cities classified as rural applicants)
 - 9 counties with a population of 50,000 or less
 - (21 counties classified as rural applicants)



20

ACTION ITEM FOR CONSIDERATION:

5

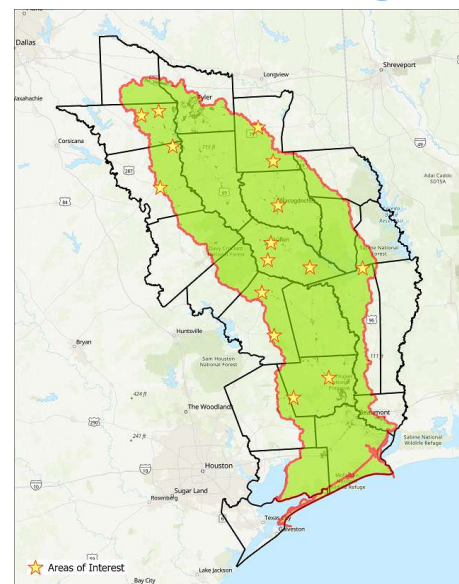
- 1) Approval by the RFPG of the definition of a small or rural community that informs the development of a prioritized list of FMEs to be submitted for Task 5B.

21

Task 4C/5B Initial Locations

5

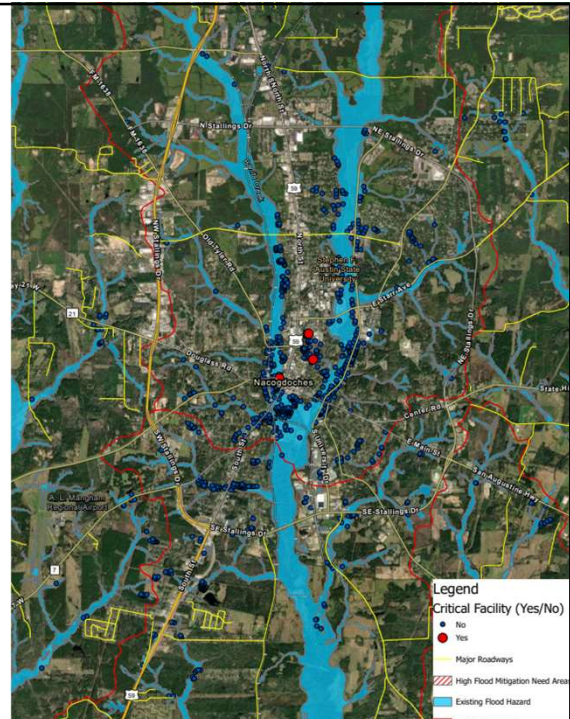
- Batch 1
 - Minimum of 2 Study Areas for FNI
 - Hardin County Master Drainage Plan
 - Minimum of 2 Study Areas for HDR
 - Angelina County Master Drainage Plan
 - 2 FMEs for TWDB (Task 5B)
 - List of FMEs for Task 5B
- Batch 2
 - Determine additional selections based on schedule and budget



22

Nacogdoches County Master Drainage Plan

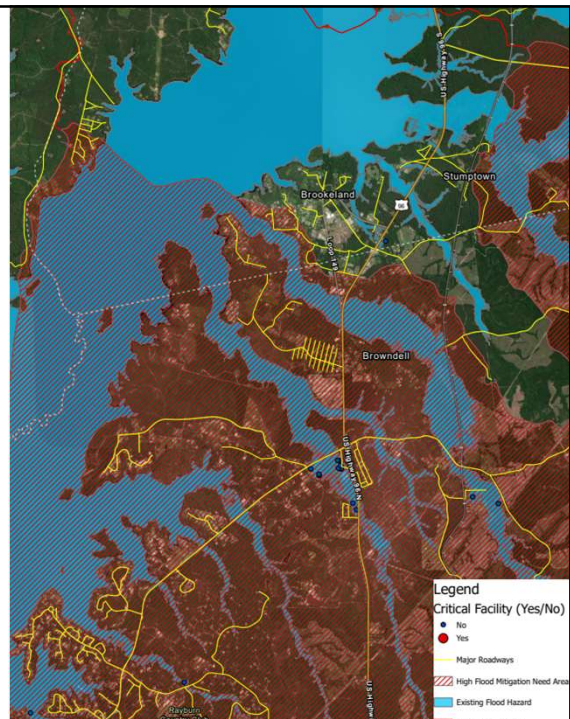
- Roadway Crossing Improvements within the City of Nacogdoches
 - Identified from Exposure Hotspot Analysis
 - Will require new model
 - Examine conveyance features within the City of Nacogdoches to determine what improvements can be made to reduce flooding risk



23

Jasper County Master Drainage Plan

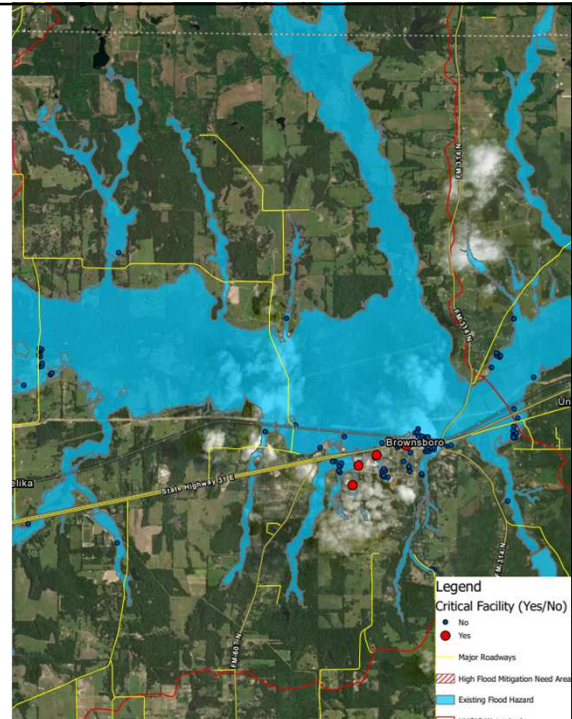
- Drainage Improvements for the City of Browndell
 - Identified from Public Webmap
 - Will require new model
 - Examine drainage improvements to reduce flooding for the City of Browndell



24

Henderson County Master Drainage Plan

- Drainage Improvements for the City of Brownsboro
 - Identified from Exposure Hotspot Analysis
 - Will require new model
 - Identify drainage improvement alternatives to alleviate flooding for the City of Brownsboro



25

Henderson County Master Drainage Plan

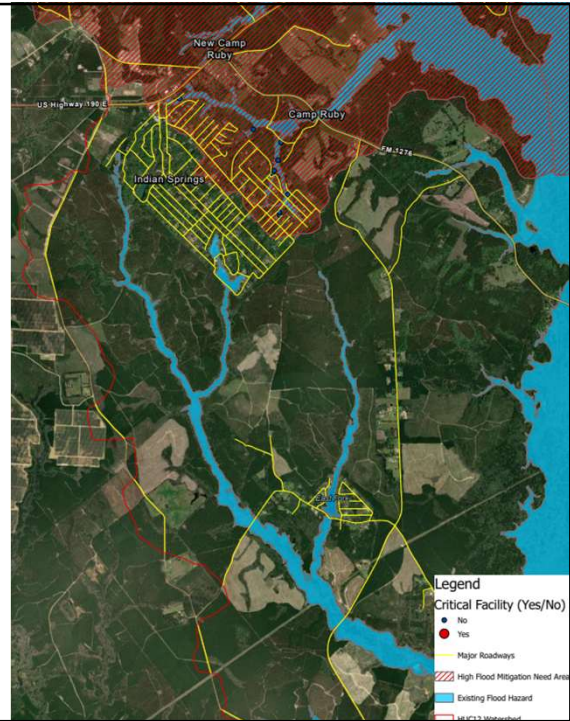
- Drainage Improvements for the City of Murchison
 - Identified from Exposure Hotspot Analysis
 - Will require new model
 - Identify drainage improvement alternatives to alleviate flooding for the City of Murchison



26

Polk County Master Drainage Plan

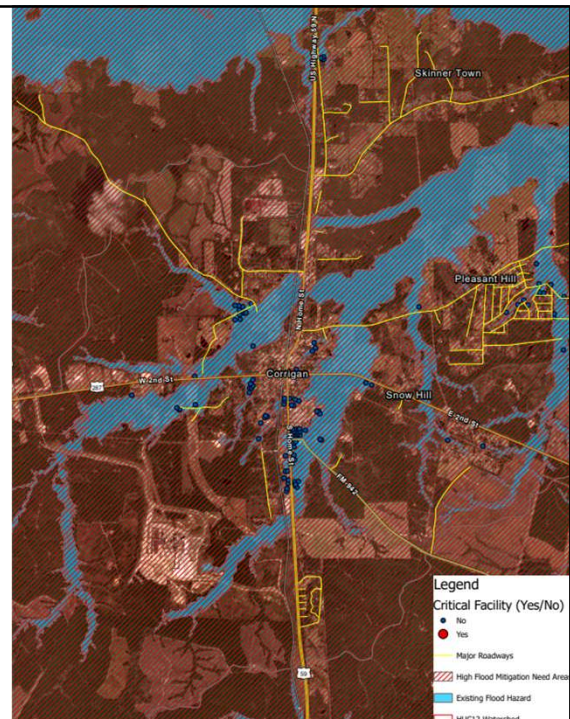
- Drainage Improvements for the community of Indian Springs
 - Identified from Exposure Hotspot Analysis
 - Will require new model
 - Identify drainage improvement alternatives to reduce flooding risk for the community of Indian Springs



27

Polk County Master Drainage Plan

- Drainage Improvements in the City of Corrigan
 - Identified from Exposure Hotspot Analysis
 - Will require new model
 - Examine conveyance features within the City of Corrigan to determine what improvements can be made to reduce flooding risk

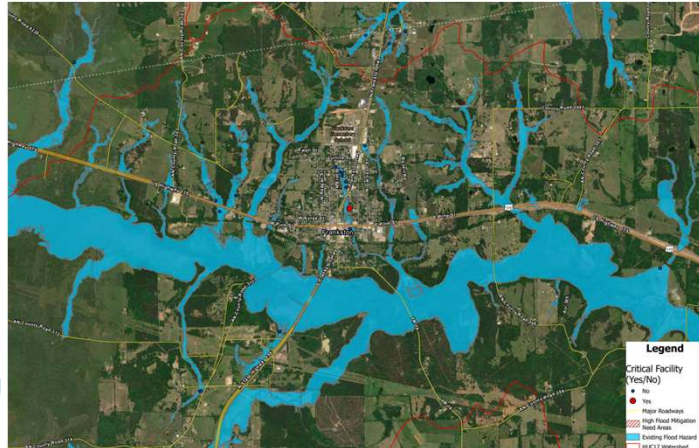


28

Anderson County Master Drainage Plan

5

- Drainage Improvements in the City of Frankston
 - Identified from Exposure Hotspot Analysis
 - Will require new model
 - Examine conveyance features within the City of Frankston to determine what improvements can be made to reduce flooding risk



29

Anderson County Master Drainage Plan

5

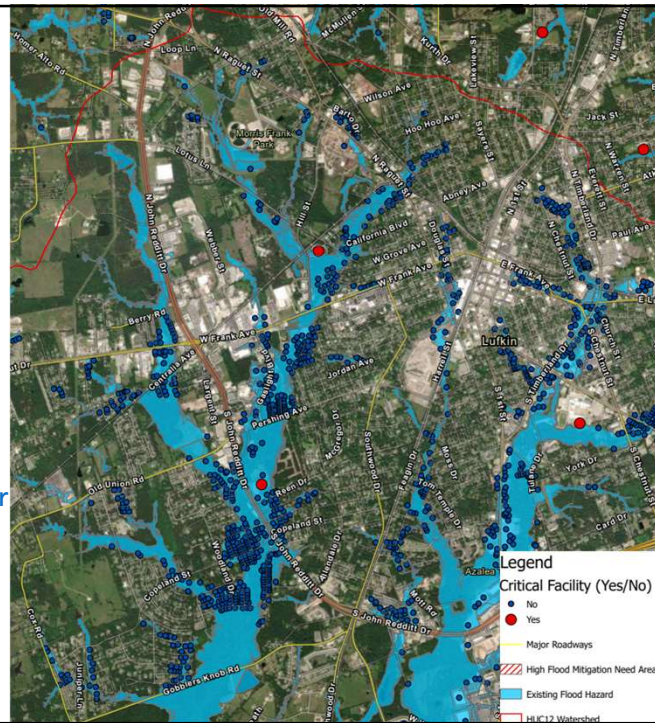
- Drainage Improvements for the eastern half of the City of Palestine
 - Identified from Exposure Hotspot Analysis
 - Will require new model
 - Examine conveyance features within the City of Palestine to determine what improvements can be made to reduce flooding risk



30

City of Lufkin

- City of Lufkin Detention Pond Construction & Improvements (05-51-0000000064)
 - Identified from Public Webmap, previously listed as an FME (05-51-0000000166)
 - Will require new model
 - Evaluate project to quantify benefits, evaluate impacts, and begin design for a retention pond behind Inez Timms property. Increase holding capacity of existing retention ponds throughout the city.



31

Rusk County Master Drainage Plan

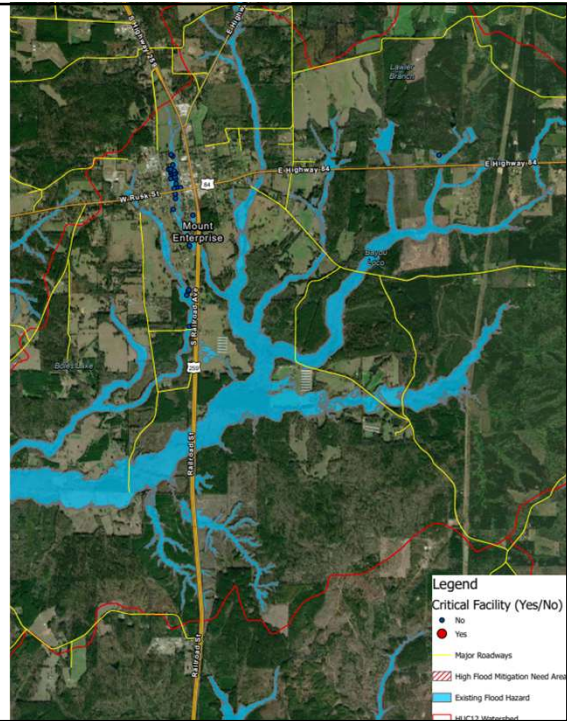
- Drainage Improvements for the City of Henderson
 - Identified from Exposure Hotspot Analysis
 - Will require new model
 - Examine conveyance features within the City of Henderson to determine what improvements can be made to reduce flooding risk



32

Rusk County Master Drainage Plan

- Drainage Improvements for the City of Mount Enterprise
 - Identified from Public Webmap
 - Will require new model
 - Examine conveyance features within the City of Mount Enterprise to determine what improvements can be made to reduce flooding risk

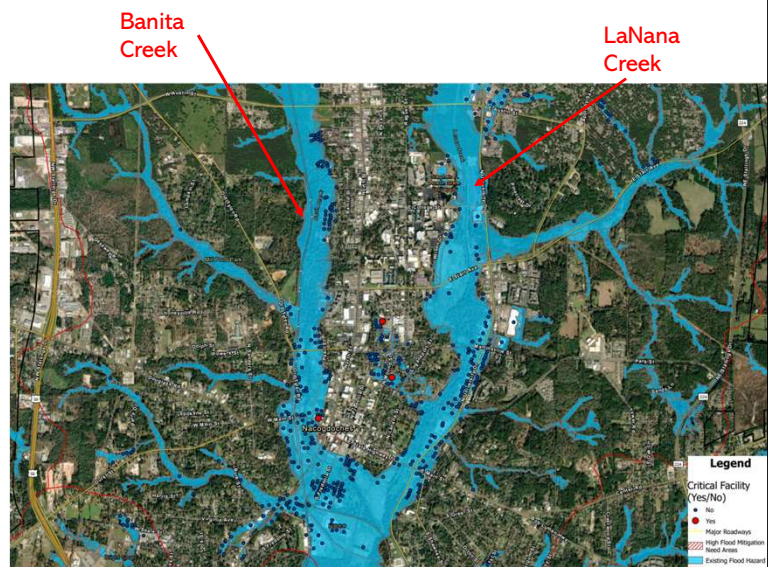


33

City of Nacogdoches

5

- City of Nacogdoches Flood Mitigation Project:
 - Identified from Exposure Hotspot analysis
 - Will require new model
 - Examine the wide-spread flooding that occurs along LaNana and Banita Creeks in the City of Nacogdoches and develop mitigation alternatives



34

ACTION ITEM FOR CONSIDERATION:

5

1. Approval by the RFPG of the prioritized list of FMEs to be submitted to the TWDB for the Board to perform under a separate program (Task 5B).

35

Planning Schedule

5

April

- Task 2B – Future Condition Flood Risk Analyses
- Task 4C – Performance of FMEs
- Scopes of Work for remaining Task 5B FMEs due to TWDB

May

- Task 4C – Performance of FMEs
- Technical Consultant to prepare Draft Chapters for Tasks 1 – 4 and make available to RFPG for review

June

- Task 4C – Performance of FMEs
- Technical Consultant to prepare Draft Chapters for Tasks 1 – 4 and make available to RFPG for review

36